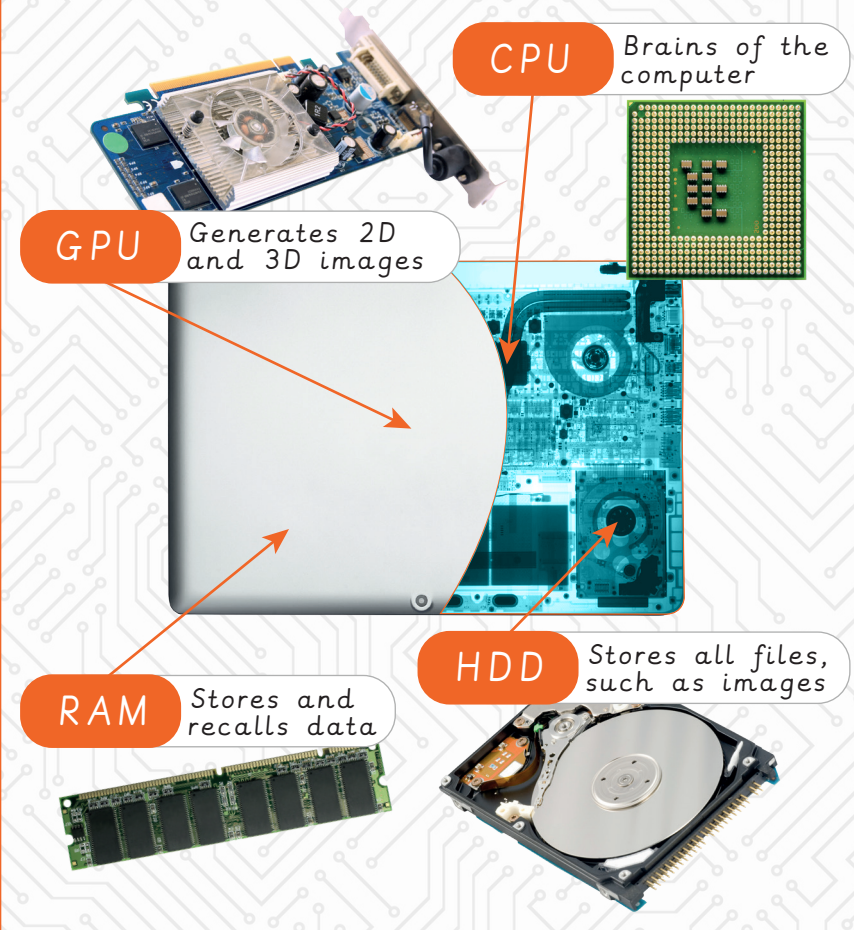


Journey inside a computer

Algorithm	A sequence of instructions when followed, solve a problem.
Computer	Electronic machine that accepts and processes information to produce an output, and then stores the results.
Computer Program	A series of instructions, that are written for a computer to follow, using inputs and outputs to produce an outcome. Also known as software or applications (apps).
CPU	Central Processing Unit. The brain of a computer that deals with all the data it receives from input and output devices, as well as programs run within the computer.
Data	Information used for a specific purpose or investigation.
Desktop	A tower computer that needs a mouse, keyboard and monitor, that remains in one place.
GPU	Graphics Processing Unit. It is a piece of hardware that is used to help generate 2D and 3D images for programs such as games.
Hard disk drive HDD	An internal or external device that can store information such as files, documents, images and programs.
Instructions	A series of steps that need to be performed in order.
QR code	Quick Response code. Is presented in a similar way to a bar code and when scanned, takes you to a specific website or provide information.
RAM	Random Access Memory. A piece of hardware that allows data to be recalled or stored within a computer.
ROM	Read Only Memory. Information stored within ROM can only be read and not edited.
Tablet device	A handheld computer, that consists of a touchscreen, operating system and a rechargeable battery.
Trackpad	An input device commonly found built into laptops. It is used to move the cursor with the touch of your finger, and some allow for multiple finger gestures.

Key facts

Computer parts inside of a laptop:



Other portable electronic devices:



Scan each of these quick response codes, with a QR scanner app or device and see where they go!

