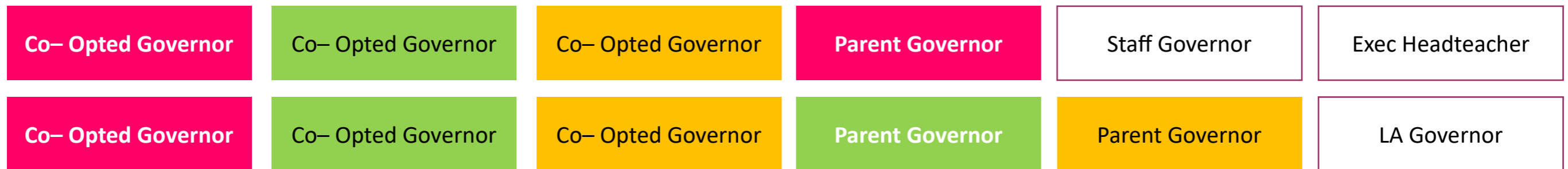
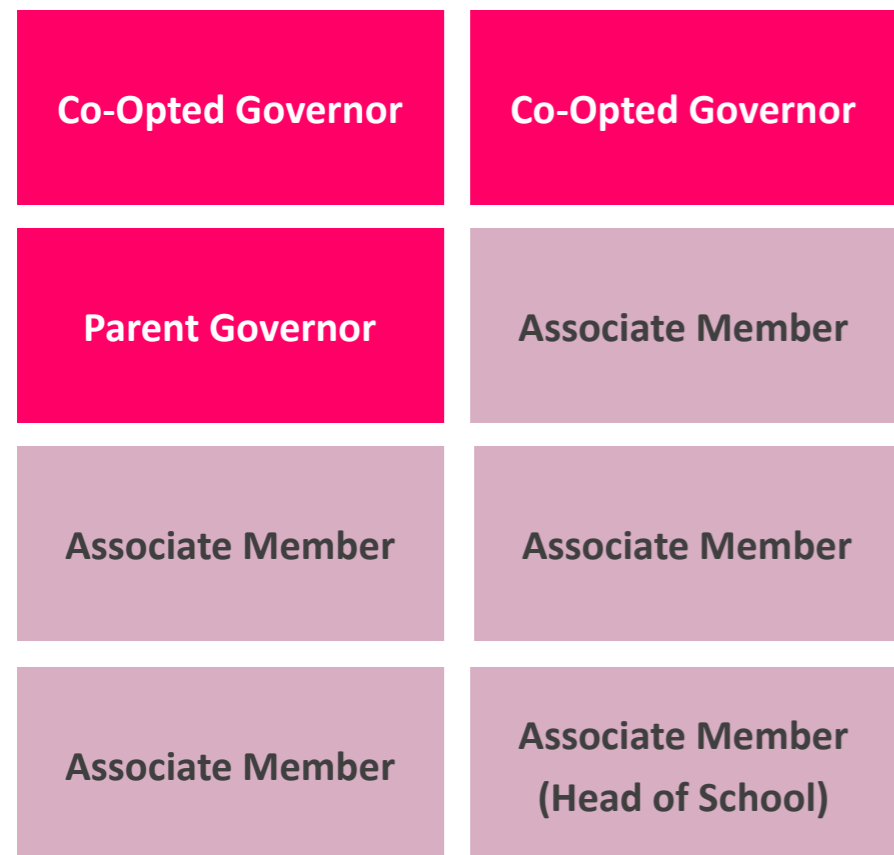


Bluebell Federation - Revised Governance Structure

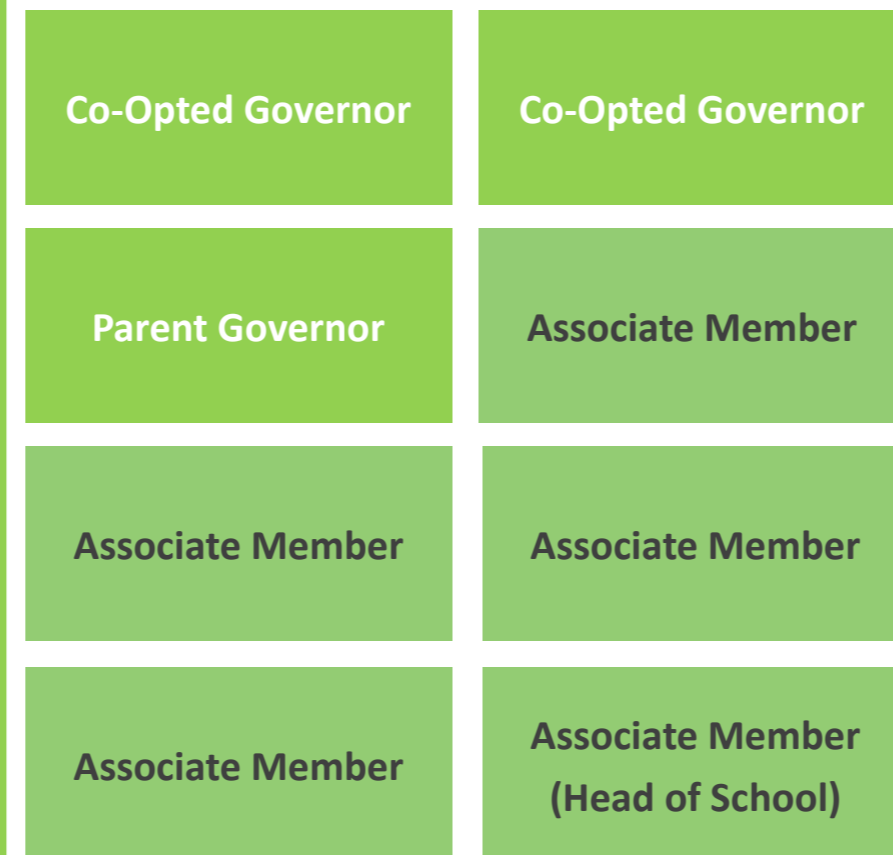
Bluebell Federation Full Governing Body



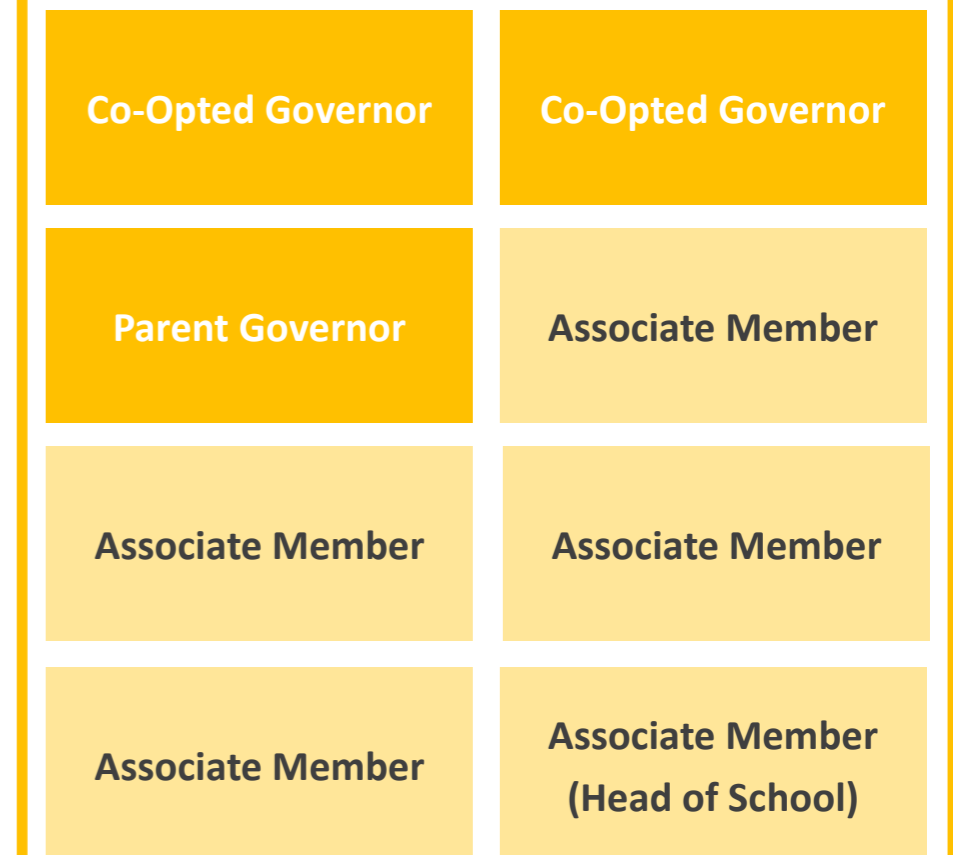
SCHOOL A COMMITTEE



SCHOOL B COMMITTEE

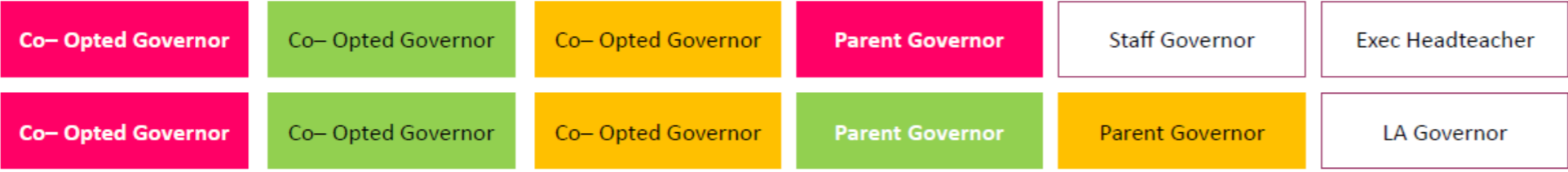


SCHOOL C COMMITTEE



GOVERNING BODIES ROLES

Bluebell Federation Full Governing Body



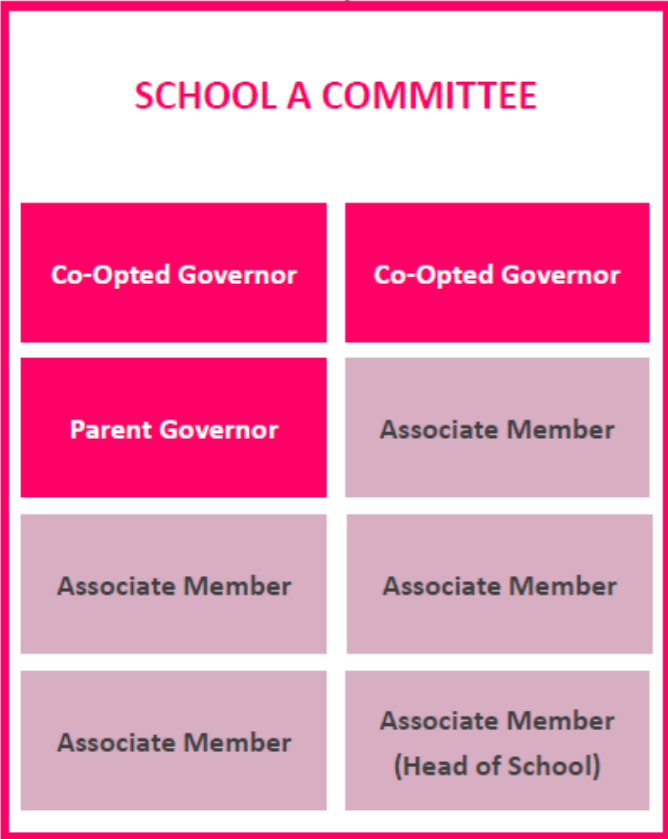
Federation Full Governing Board

- 6 x Co-Opted Governors (2 from each school)
- 3 x Parent Governors
- 1 x LA Governor (from any school committee)
- 1 x Executive Headteacher
- 1 x Staff Governor

Total: 11 Governors + Executive Head

FGB Roles (from above)

- 1 X Chair (Elected annually)
 - 1 x Vice Chair (Elected annually)
- NB: It should be noted that consideration is currently being given to making the Chair and Vice Chair independent of any individual school.



School A Committee

- 1 x Co-Opted Governor (Chair)
- 1 x Co-Opted Governor (Link area 1)
- 1 x Parent Governor (Link area 2)
- 1 x Associate Member (Link area 3)
- 1 x Associate Member (Link area 4)
- 1 x Associate Member (Link area 5)
- 1 x Associate Member (Link area 6)
- 1 x Associate Member (Head of School)

School B Committee

- 1 x Co-Opted Governor (Chair)
- 1 x Co-Opted Governor (Link area 1)
- 1 x Parent Governor (Link area 2)
- 1 x Associate Member (Link area 3)
- 1 x Associate Member (Link area 4)
- 1 x Associate Member (Link area 5)
- 1 x Associate Member (Link area 6)
- 1 x Associate Member (Head of School)

School C Committee

- 1 x Co-Opted Governor (Chair)
- 1 x Co-Opted Governor (Link areas 1)
- 1 x Parent Governor (Link area 2)
- 1 x Associate Member Parent (Link area 3)
- 1 x Associate Member (Link area 4)
- 1 x Associate Member (Link area 5)
- 1 x Associate Member (Link area 6)
- 1 x Associate Member (Head of School)

Required Link Roles

- Finance
- SEND
- Pupil Premium
- Curriculum
- Health & Safety
- Safeguarding